

2U Shelf Unit

Efficient Connection Management that Helps You Save on Maintenance and Replacement Costs

Product Description

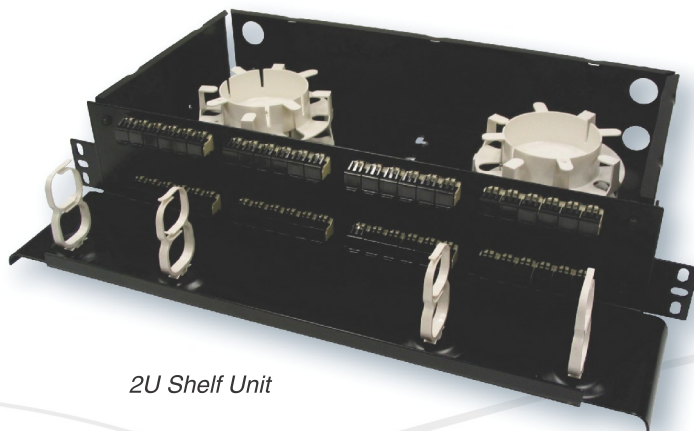
The 2U Shelf Unit is an efficient connection management solution to terminate and splice fibers, that enables quicker network rearrangements and easier fiber resources tracking. Its innovative design and configuration also help save on maintenance and replacement costs.

The 2U Shelf Unit houses up to 48 ST, 48 SC or 96 LC terminations, and features a versatile design that can accommodate 48 mechanical splices, 96 single fusion splices, or 36 ribbon (mass fusion) splices using optional splice organizers. Its functional dimensions make the shelf unit ideal for 19-inch frame mounting, and optional extender brackets can be added to fit into 23-inch frames.

Other features of the 2U Shelf Unit such as a clear plastic shelf cover for protection of the fibers, labels, straightforward front-mounted jumper management, and multiple preassembled configurations, allow users manage cable resources efficiently.

2U Shelf Unit Unique Features

- Integrated Front Trough



2U Shelf Unit

Common Features



2U Shelf Unit Stacked Drum Arrangement

- Preassembled shelves in multiple configurations
- OFS Ganged Adapter Sets maximize footprint
- Includes adapter panels for 96 LC, 48 SC or 48 ST terminations
- 19-inch frame mounting
- Fits 2U rack space (3.5" h x 17" w x 8" d)
- Clear plastic shelf cover protects fibers
- Four 3" Fiber Spools
- One Compression Grommet
- Labels
- Optional extender brackets for 23" frame

Features and Benefits:

- Slim 2 Unit Mounting Height (2U rack space)
- Front-mounted jumper management
- Fits 19", 23", or ETSI frames
- Can manage both splices and terminations

Ordering Information

Description	Description
2U F-LIU EMPTY	2U F-LIU SC24 Beige
2U F-LIU LC24/SC12 Blue/Beige	2U F-LIU SC36 Aqua
2U F-LIU LC36 Beige	2U F-LIU SC48 Aqua
2U F-LIU LC48 Aqua	2U F-LIU SC48 Beige
2U F-LIU LC48 Beige	2U F-LIU SC24 Blue
2U F-LIU LC48 Blue	2U F-LIU SC48 Blue
2U F-LIU SC12 Aqua	2U F-LIU ST12/ST12 Beige/Blue
2U F-LIU SC12 Beige	2U F-LIU ST24 Aqua
2U F-LIU SC12 Blue	2U F-LIU ST24 Beige
2U F-LIU SC12/SC12 Aqua/Blue	2U F-LIU ST24 Blue
2U F-LIU SC12/SC12 Beige/Blue	2U F-LIU ST48 Blue
2U F-LIU SC24 Aqua	

Additional Configurations Available Upon Request



Mass Fusion Holder

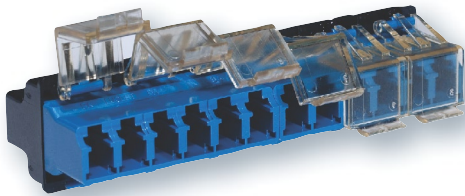
Optional Hardware

Description

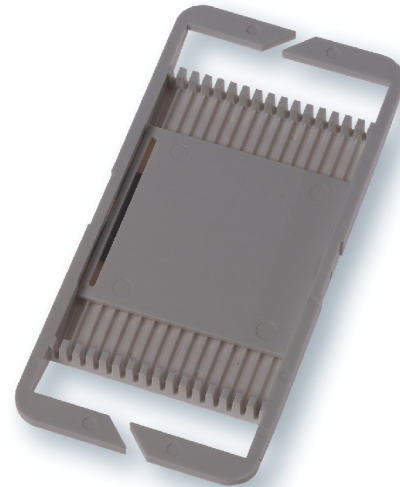
Mass Fusion Holder Kit of 6 and bracket (18 mass fusions; 6 per holder)*

Single Fusion Holder Kit of 6 and bracket (48 single fusions; 16 per holder)*

* Not yet Released.



*Blue Single-Mode Ganged Adapter
(Black Shutters Standard - Not Shown)*



Single Fusion Holder

For additional information please contact your sales representative. You can also visit our website at <http://www.ofsoptics.com> or call 1-888-fiberhelp.

ST is a registered trademark of Furukawa Electric North America, Inc.

OFS reserves the right to make changes to the prices and product(s) described in this document in the interest of improving internal design, operational function, and/or reliability. OFS does not assume any liability that may occur due to the use or application of the product(s) and/or circuit layout(s) described herein.

This document is for informational purposes only and is not intended to modify or supplement any OFS warranties or specifications relating to any of its products or services.

Copyright © 2006 Furukawa Electric North America, Inc.
All rights reserved, printed in USA.

OFS
Marketing Communications
fap-255-0206



Leading Optical Innovations

