

## Identify Splitter Parts

---

Splitter parts are identified with letters on part tree as follows:

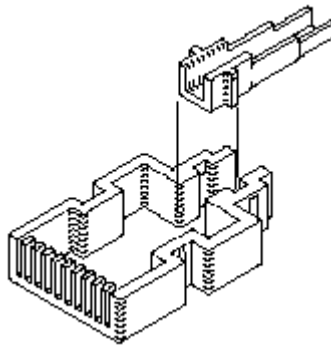
- A - *AccuRibbon* Splitter Base
- B - Fiber Splitter Base
- C - 12-Fiber Insert
- D - 0.40 Inch (10.2 mm) Core Tube Insert
- E - 0.32 Inch (8.1 mm) Core Tube Insert
- F - 0.24 Inch (6.1 mm) Core Tube Insert
- G - Cover
- H - 0.55 Inch (14 mm) Core Tube Insert (not attached to part tree)

## Assemble Either *AccuRibbon* Or Fiber Splitter

---

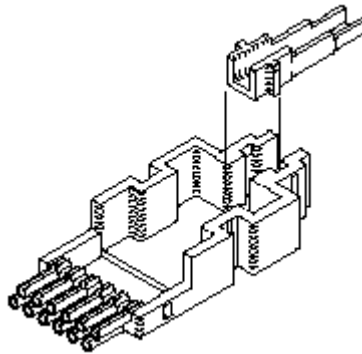
### ⇒ NOTE:

Parts should be carefully deburred when removed from part tree. Part C, 12-fiber insert, should be cut off to prevent it from breaking.



**633-501-101-48**  
**Instruction Sheet**

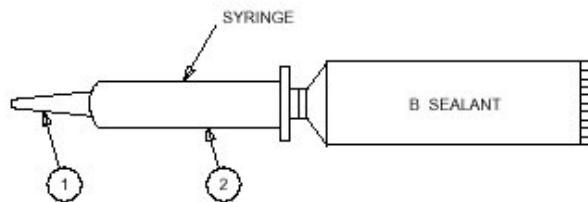
1. Assemble **AccuRibbon** splitter. Remove Parts A, G, and appropriate size core tube insert D, E, or F from part tree. (See Note.) Use insert H (not on part tree) for 0.55-inch (14 mm) core tube. Place core tube insert into ribbon splitter base as shown.



2. Assemble fiber splitter. Remove Parts B, C, G, and appropriate size core tube insert (D, E, or F) from part tree. (See Note.) Use insert H (not on part tree) for 0.55-inch (14 mm) core tube. Place core tube insert into fiber splitter base as shown. Attach 12-fiber insert, Part C, at this time to check fit; then remove. See Step 7, Substep 5.

## **Fill Syringe**

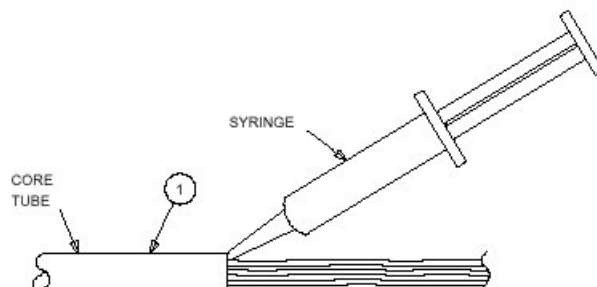
---



1. Using scissors, cut tip off syringe. Then, remove plunger.
2. Fill syringe with B-sealant and replace plunger into syringe.

## Inject Sealant

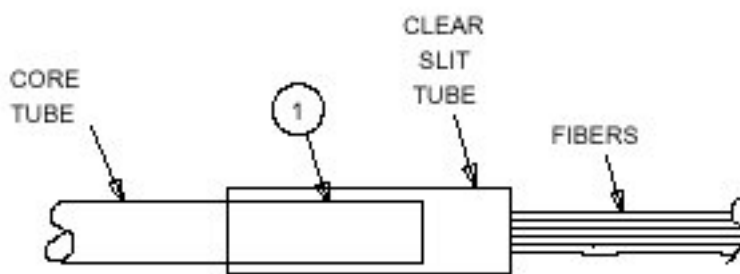
---



1. Inject one-half of B-sealant in fully loaded syringe into end of core tube. Sealant should surround fibers inside core tube.

## Install Clear Tube

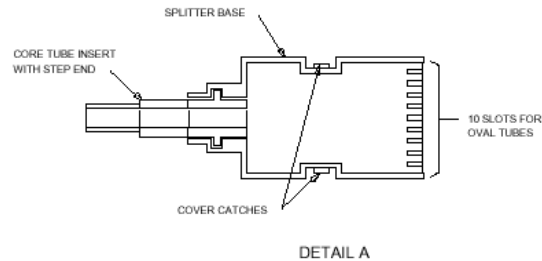
---



1. Coat end of core tube with B-sealant. Then, place fibers in slit on clear tube, and slide tube over fibers and about 3/4 inch (19.1 mm) onto core tube.
2. To install **AccuRibbon** Blocking Splitter, go to Step 6.  
To install Fiber Blocking Splitter, go to Step 7.

## Install Accuribbon Blocking Splitter Splitter Base

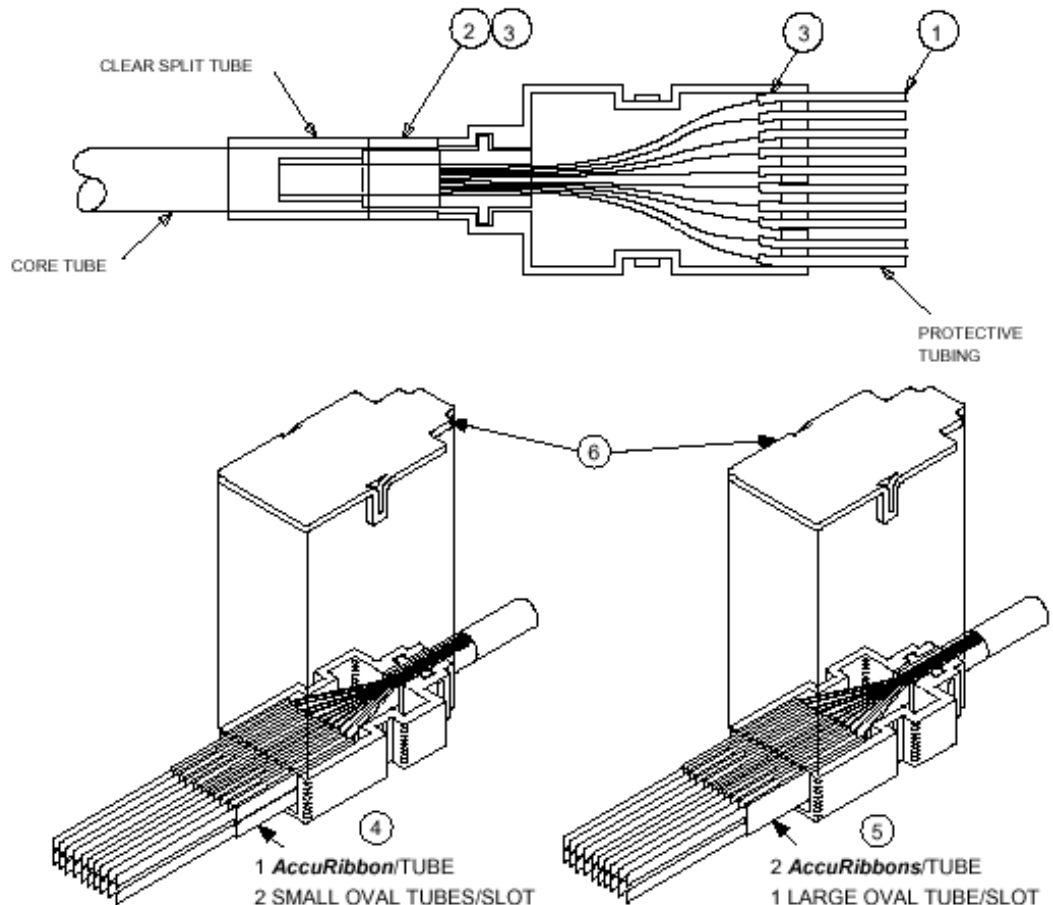
---



1. Cut 1 inch (25.4 mm) piece of oval tubing for each ribbon.
2. Place **AccuRibbons** into stepped end of splitter (Detail A) and carefully slide stepped end into clear tube and core tube. Turn core tube so slit in tube is opposite opening in stepped end of splitter.
3. Fill slot in stepped end of splitter with B sealant. Do not fill past end of clear tube.
4. Insert one 12-fiber **AccuRibbon** into one small oval tube. Place two oval tubes into each slot. Let end of tube stick inside splitter by 3/16 inch (4.8 mm).

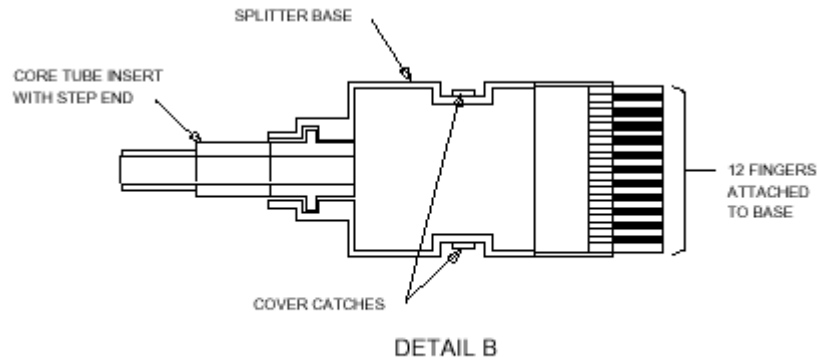
-or-

5. Insert two 16-24 fiber **AccuRibbons** into one large oval tube. Place one oval tube into each slot. Let end of oval tube stick inside splitter by 3/16 inch (4.8 mm).
6. Insert cover ears over catches on splitter and snap cover into place.

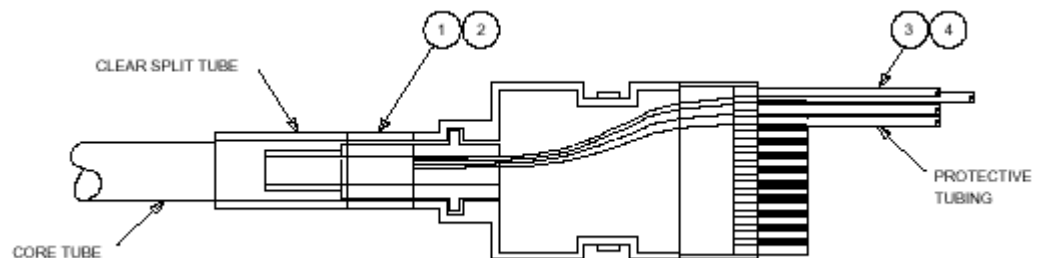


## Install Fiber Blocking Splitter

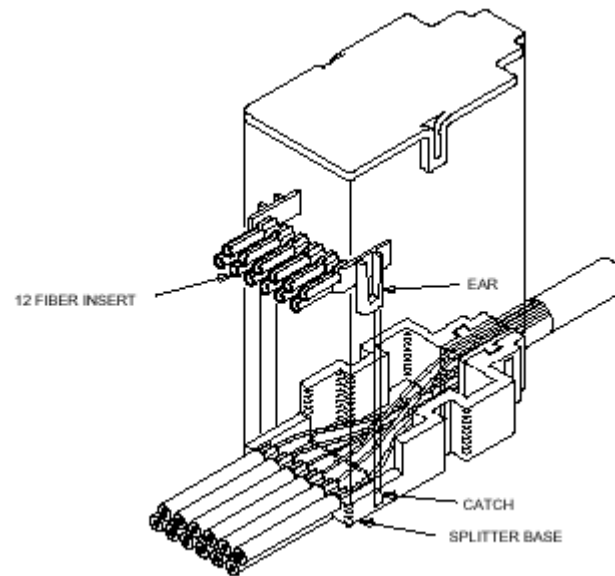
1. Place fiber bundles into stepped end of splitter (Detail B) and carefully slide stepped end into clear tube and core tube. Turn clear tube so split in tube is opposite opening in stepped end of splitter



2. Fill slot in stepped end of splitter with B-sealant. **DO NOT FILL END OF CLEAR TUBE.**
3. Separate fibers as required and insert separated fibers through protective tubes. **IMPORTANT:** If two fibers of same color are placed in same protective tube, cut one fiber shorter than the other to maintain identification.
4. Place each group of separated fibers into finger slot in splitter and slide protective tubes over fingers.



5. Attach 12-fiber insert to splitter base as shown. Carefully move fibers not inserted in PVC tubes to side before attaching 12-fiber insert. While pressing 12-fiber insert down with one hand, squeeze ears of fiber splitter until it snaps in place over catches on base.



6. Repeat Substeps 3 and 4 as required.
7. Insert cover ears over catches on splitter and snap cover into place.