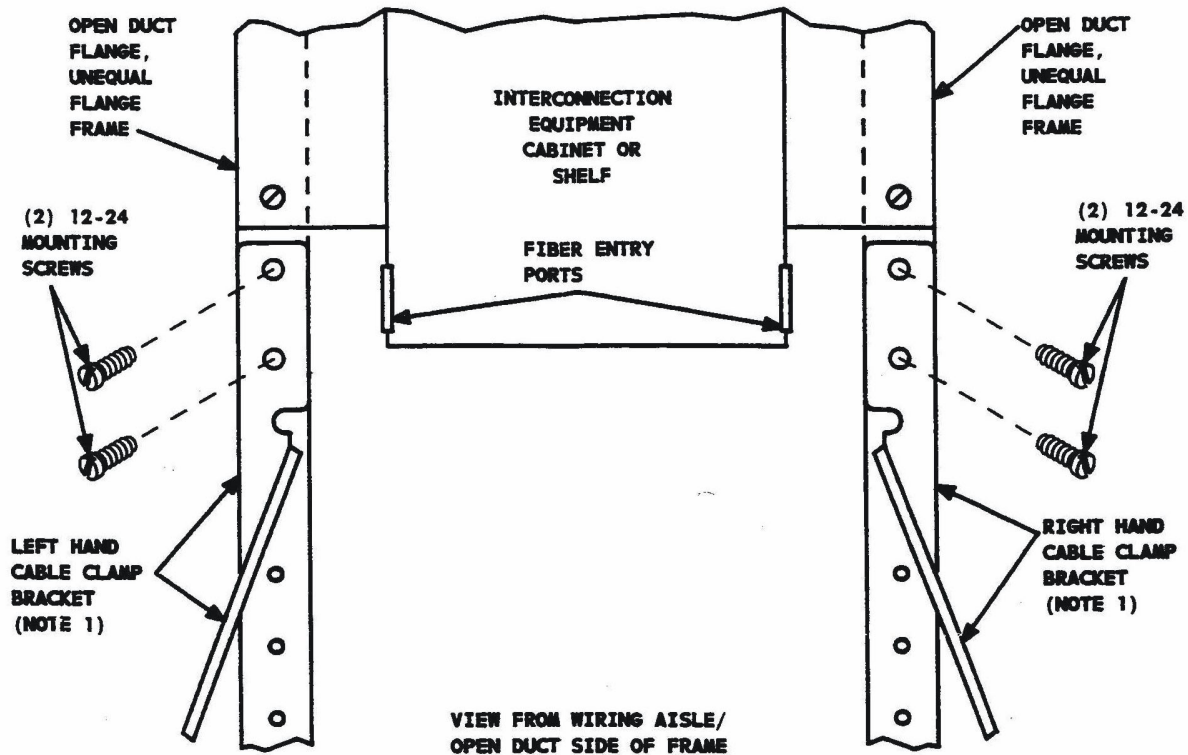


152 A Bracket
Lightguide Cable Clamp
Bracket for Bottom Cable Entry
(Previously Designated ED 8C012-50)
Installation Assembly

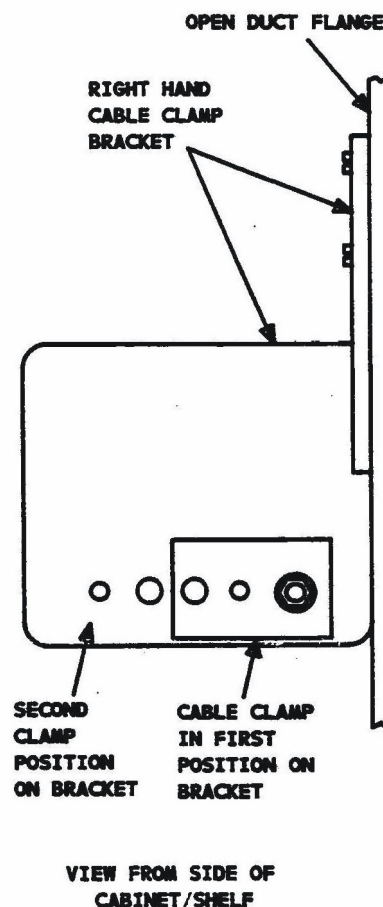
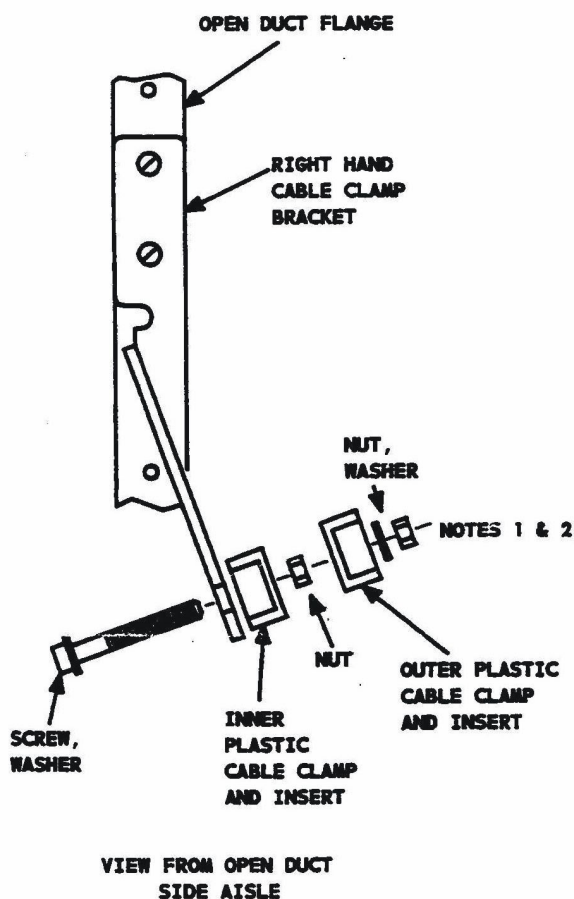
STEP 1 - MOUNT BRACKET



Notes:

1. Left-hand or right-hand bracket (or both) may be installed depending on routing of outside plant (OP) cables to entry ports.
2. Brackets may also be installed inverted to accept outside plant cables from overhead.
1. Position bracket on open duct side of frame to provide 1-1/2 inch vertical space from bottom of interconnection cabinet entry port to exit point of the lightguide fibers/ribbons from the outside plant cable sheath.
2. Secure bracket with two 12-24 mounting screws furnished with each bracket.

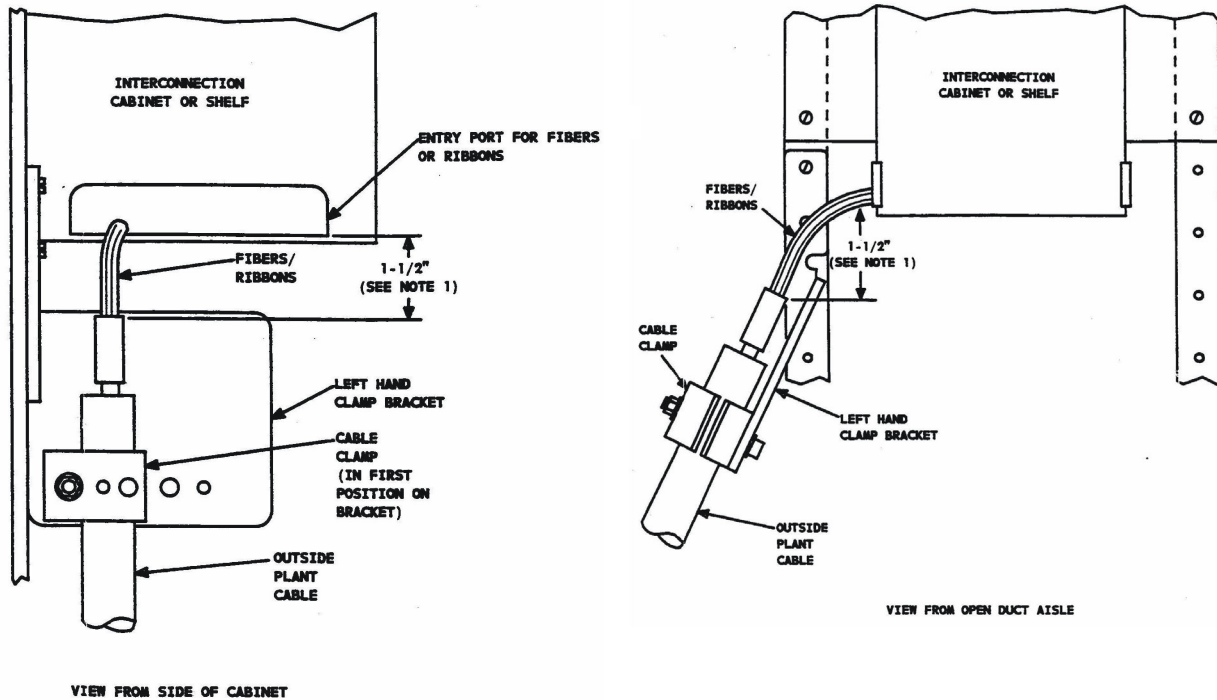
STEP 2 - ASSEMBLE CABLE CLAMP TO BRACKET



Notes:

1. The plastic cable clamp assemblies may be removed from either stranded cable or ribbon cable interconnection cabinets or ordered individually per the 12A1 cable clamp for assembly to a cable clamp bracket. Older metal-type cable clamps are not compatible with the 152A bracket.
2. Cable clamps from ribbon cable cabinets wq 12A1 cable clamps also contain a B-bond clamp and terminal lug.
3. Select mounting position. Each bracket can accept two cable clamps. The first clamp installed should always be located in position closest to frame.
2. Place inner plastic cable clamp on bracket and secure inner clamp with screw, washer, and nut.
3. Attach outer plastic clamp, inserts, washer, and nut but only hand tighten outer nut at this time.

STEP 3 - INSTALL OUTSIDE PLANT CABLE TO CABLE CLAMP



Note:

1. There should be a vertical distance of approximately 1-1/2 inches from bottom of cabinet fiber entry port to the end of cable sheath where the fibers/ribbons exit (sheath termination hardware on ribbon cables or core tube on stranded type cable). The intent of this positioning is to provide a bend radius of at least 1-1/2 inches for the fibers or ribbons being routed from the cable to the entry port.
1. Place prepared stranded cable or sheath termination hardware of ribbon cable between inner and outer plastic cable clamp and inserts. Tighten outer nut with 216C-type tool (see note 1).
2. Ground metallic sheath cable using standard grounding procedures and materials provided for termination on the cabinets/shelves.