

846746774

ENGR		
DRAWN		

09-20-01 ISSUE 1

REDRAWN ON OFS FORMAT WITH CHANGE
 CHNG: CORRECTED SOLID MODEL AND ADDED REF SET.
 REMVD: PART NO. MARKING REQT AND ASSOC NOTE.

07-01-05 CO05AK5105 NP ISS: 1

SRA WCW JAF DLF 10

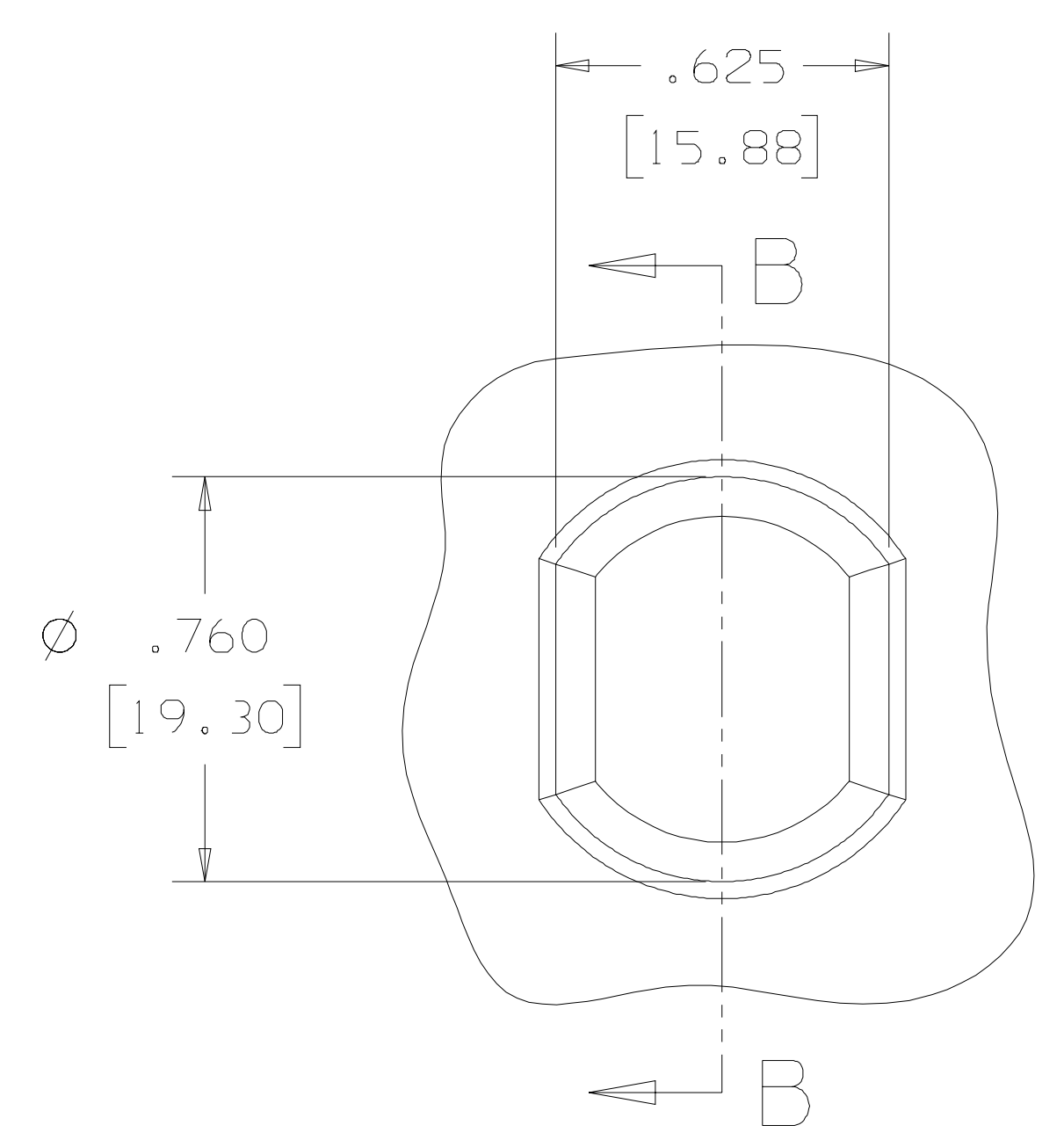
CHNG: MAT'L WAS LEXAN ML-6124, XS-18719 OR MAKROLON 6485, 3599.

11-14-05 CO05AK5042 NP ISS: 1

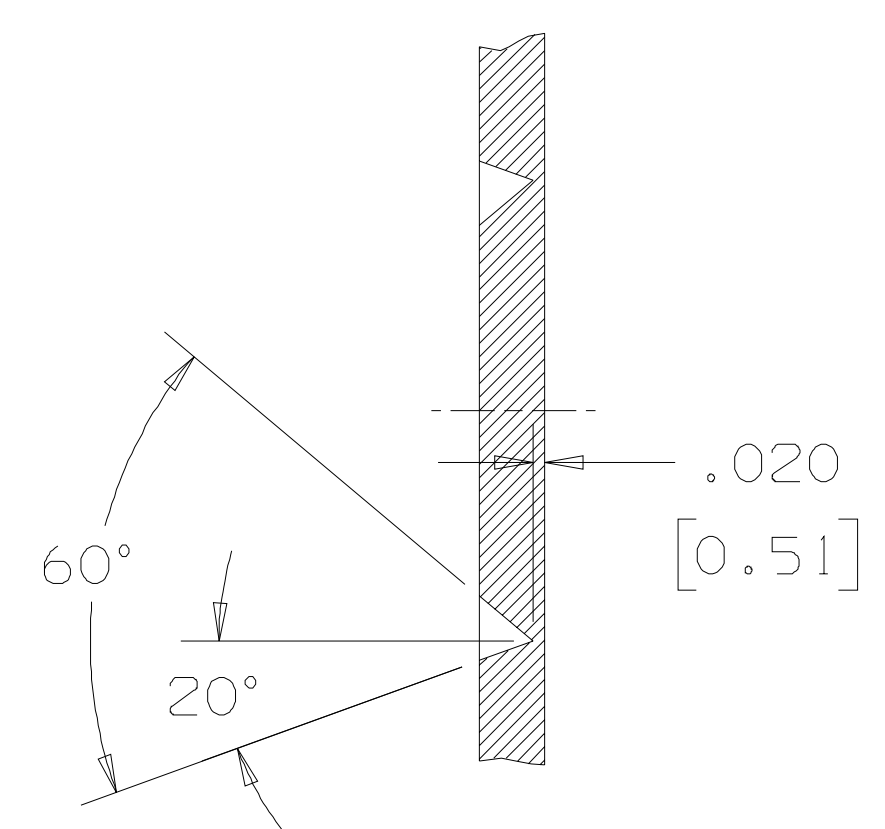
SRA WCW JCB WCW 11

NOTES:

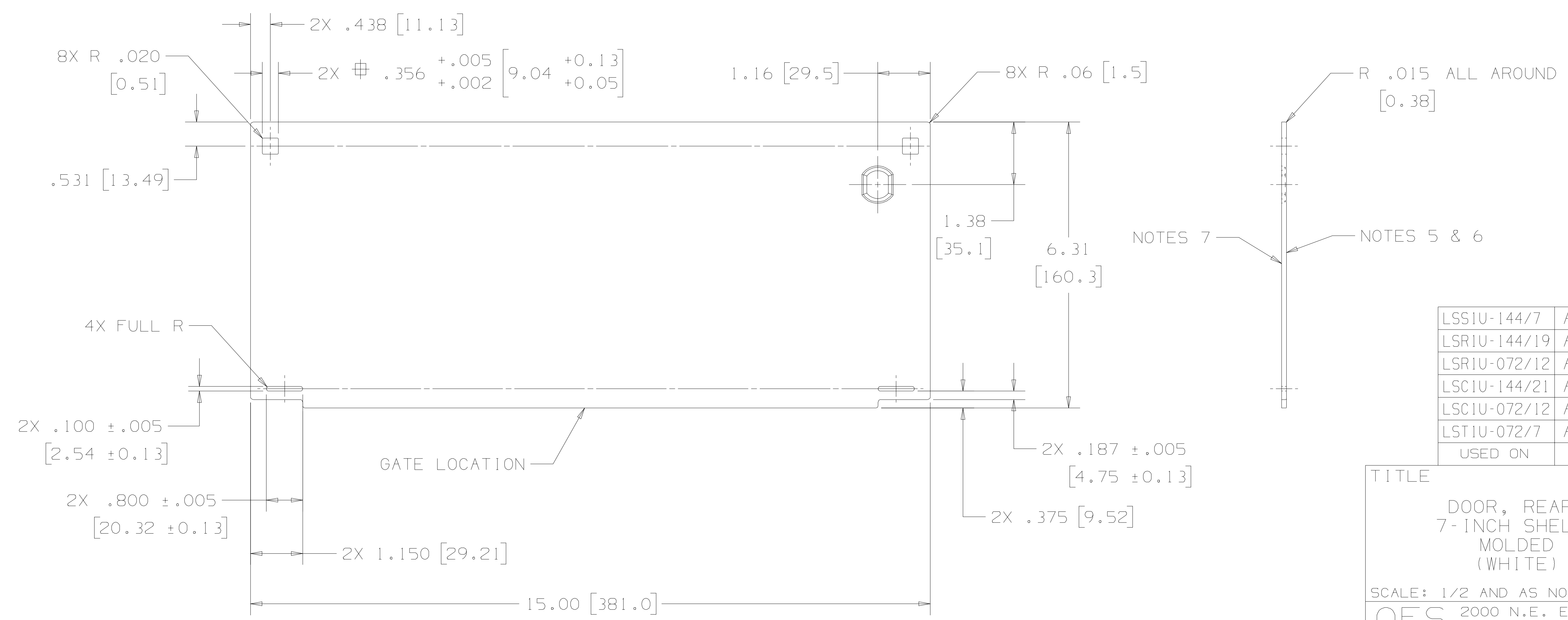
- UNLESS OTHERWISE SPECIFIED, ALL DIMENSIONS ARE IN INCHES. NONLIMITED DIMENSIONS OTHER THAN SIZE OF RAW MATERIAL SHALL BE HELD AS FOLLOWS WHEN EXPRESSED:
 TO 2 DECIMAL PLACES ±.02 [0.5] AS ANGLES ± TO 3 DECIMAL PLACES ±.010 [0.25]
 THIS DRAWING HAS BEEN PREPARED IN ACCORDANCE WITH ANSI Y14.5M - 1994. DIMENSIONS SHOWN IN BRACKETS [] ARE MILLIMETERS AND FOR REFERENCE.
- REMOVE ALL BURRS AND BREAK SHARP EDGES AND CORNERS.
- MATERIAL: POLYCARBONATE INJECTION MOLDING COMPOUND. FLAME RETARDANT RATING UL 94 V-0 AT .045 [1.14].
 COLOR: CENTRAL OFFICE WHITE,
 L=87.38, A= -0.7, B=3.72
 MAXIMUM REGRIND: 15%.
 MAY BE OBTAINED FROM G.E. AS LEXAN 945 GY9C009.
- PART SHALL BE FREE OF FLASH, GATE VESTIGE, MOLD RELEASE AND OTHER FOREIGN MATERIAL.
- PART SHALL BE FLAT AND STRAIGHT WITHIN .060 [1.52] TOTAL.
- NO EJECTOR PIN MARKS PERMITTED ON THIS SURFACE.
- THIS SURFACE SHALL HAVE A LIGHT UNIFORM TEXTURED FINISH SO AS TO SIMULATE A PAINTED METAL SURFACE PER OS-11150.
- THIS SURFACE SHALL HAVE A LIGHT TEXTURE EXCEPT AT THE LOCATION OF INSERTS, EJECTOR PINS, OR WITHIN APPROXIMATELY .10 [2.5] OF THE PART EDGE.



DETAIL A
 SCALE 2/1



SECTION B-B
 SCALE 2/1



LSSIU-144/7	A87AK1040
LSRIU-144/19	A87AK1046
LSRIU-072/12	A87AK1047
LSCIU-144/21	A87AK1042
LSCIU-072/12	A87AK1044
LSTIU-072/7	A87AK1045
USED ON	DRAWING

TITLE
 DOOR, REAR,
 7-INCH SHELF,
 MOLDED
 (WHITE)
 SCALE: 1/2 AND AS NOTED
OFS 2000 N.E. EXPRESSWAY,
 NORCROSS, GA. 30071
 COMCODE: 846746774

OFS - PROPRIETARY
 Copyright © 2005
 FITEL USA, CORP.

846746774

SHEET 1 OF 1
 DWG SIZE C