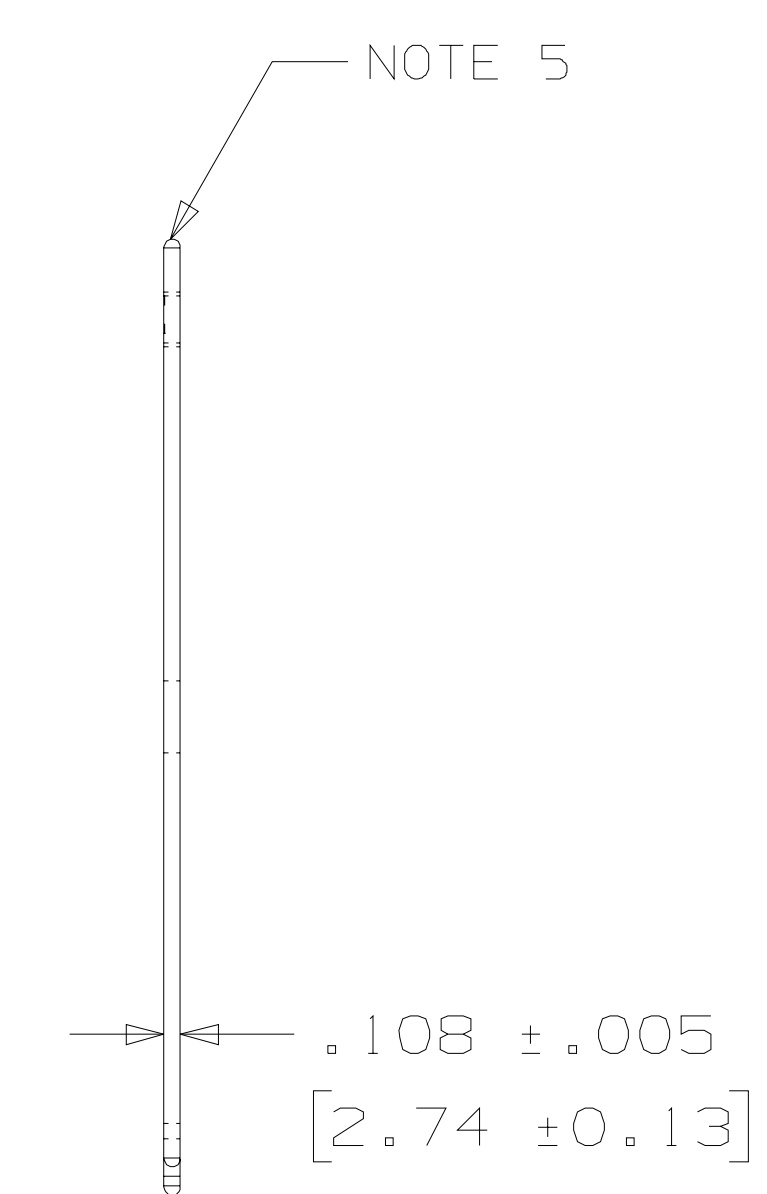
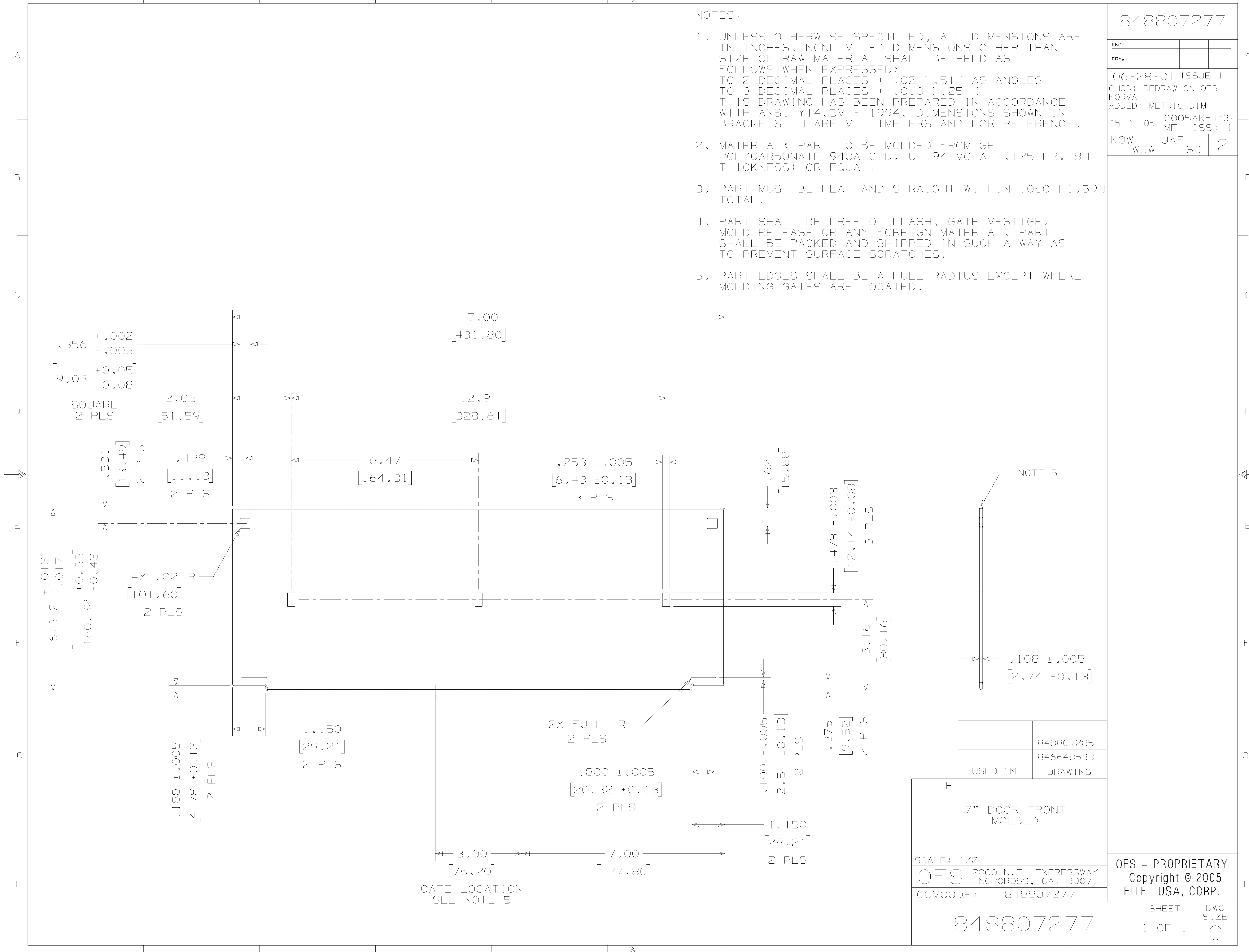


848807277

ENGR		
DRAWN		
06-28-01 ISSUE 1		
CHGD: REDRAW ON OFS FORMAT ADDED: METRIC DIM		
05-31-05	CO05AK5108 MF	ISS: 1
KOW WCW	JAF SC	2

NOTES:

- UNLESS OTHERWISE SPECIFIED, ALL DIMENSIONS ARE IN INCHES. NONLIMITED DIMENSIONS OTHER THAN SIZE OF RAW MATERIAL SHALL BE HELD AS FOLLOWS WHEN EXPRESSED:  
TO 2 DECIMAL PLACES ± .02 [ .51 ] AS ANGLES ± TO 3 DECIMAL PLACES ± .010 [ .254 ] THIS DRAWING HAS BEEN PREPARED IN ACCORDANCE WITH ANSI Y14.5M - 1994. DIMENSIONS SHOWN IN BRACKETS [ ] ARE MILLIMETERS AND FOR REFERENCE.
- MATERIAL: PART TO BE MOLDED FROM GE POLYCARBONATE 940A CPD. UL 94 VO AT (.125 [ 3.18 ] THICKNESS) OR EQUAL.
- PART MUST BE FLAT AND STRAIGHT WITHIN .060 [ 1.59 ] TOTAL.
- PART SHALL BE FREE OF FLASH, GATE VESTIGE, MOLD RELEASE OR ANY FOREIGN MATERIAL. PART SHALL BE PACKED AND SHIPPED IN SUCH A WAY AS TO PREVENT SURFACE SCRATCHES.
- PART EDGES SHALL BE A FULL RADIUS EXCEPT WHERE MOLDING GATES ARE LOCATED.



	848807285
	846648533
USED ON	DRAWING

TITLE	7" DOOR FRONT MOLDED
SCALE:	1/2
OFS	2000 N.E. EXPRESSWAY, NORCROSS, GA. 30071
COMCODE:	848807277

OFS - PROPRIETARY  
Copyright © 2005  
FITEL USA, CORP.

848807277

SHEET	DWG
1 OF 1	SIZE
	C