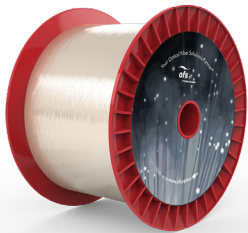


Bismuth Doped Optical Fiber for O-Band Amplification



Product Specifications	7000815-01* Bismuth Doped Optical Fiber
Optical Specifications	
Core Diameter	7.0 ± 1 μm
Glass Cladding Diameter	125 ± 2 μm
Coating Diameter	245 ± 5 μm
Coating Type	UV Acrylate
DGD**	TBD
Dispersion	TBD
Core NA	0.12 ± 0.01
Cutoff Wavelength	< 1.19 μm
Bend Diameter Induced Loss	TBD
Reference Amplifier Specifications	
Amplifier Configuration	Single Stage Counter-pump
BDF Length	160 ± 20 m
Pump Wavelength	1195 ± 5 nm
Pump Power	500 mW
Peak Wavelength	1310 nm
Operating Wavelength	1270 - 1335 nm
Input Power Range	-30 to 0 dBm
Small Signal Gain @ 1310 nm -25 dBm input	> 17 dB
Saturated Output Power	> 15 dBm @ 1310 nm 0dBm input
Noise Figure	< 6.0 dB @ 1310 nm -15 dBm input
Polarization Dependent Gain @ 1310 nm -25 dBm input	< 0.3 dB
Attenuation When Disabled	TBD

*The specifications outlined above are for prototype under development. Prototype specification is subject to change.

**Measured at 1550 nm



For additional information please contact your sales representative.

You can also visit our website at www.ofsoptics.com or call 1-888-fiberhelp (1-888-342-3743) USA or 1-770-798-5555 outside the USA.