

Installation Instructions

EZ!Connector 900 μ m

Table of Contents

1. Purpose	2
2. Mechanical Connector Technology	2
3. Product Components	2
4. Product Care and Safety	3
5. Required Tools	3
6. Installation Procedure	
6.1 Connector Boot Installation	3
6.2 Measure and Strip the Fiber	3
6.3 Verify Stripped Fiber Length	3
6.4 Clean Fiber	4
6.5 Cleave Fiber	4
6.6 Prepare Connector and Fiber Holders	4
6.7 Position Fiber in Fiber Holder	4
6.8 Detach the Fiber Holder	4
6.9 Place Fiber Holder on Connector Holder	5
6.10 Remove Cover	5
6.11 Remove V-groove Tool	5
6.12 Remove Fiber and Connector	6
6.13 Attached the Connector Boot	6
6.14 Connector Assembly Complete	6

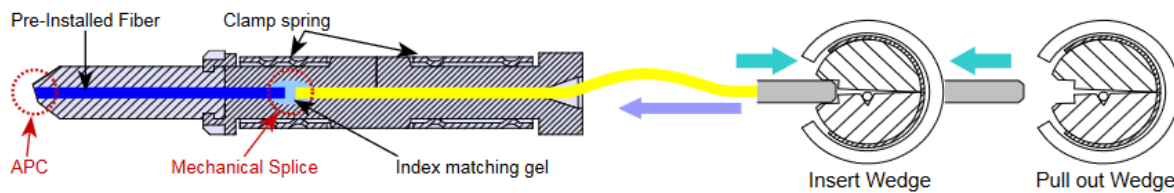
1. Purpose

This document describes the installation procedures associated with the EZ!Connector 900 μ m. The purpose of the document is to ensure the safe and correct installation of the EZ!Connector 900 μ m.

The EZ!Connector 900 μ m is designed for quick and easy field assembly. The installed connector is comparable to factory installed SC/APC connectors. This connector is not designed for re-use.

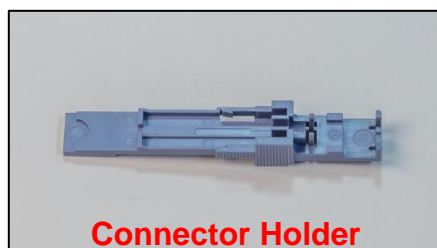
2. Mechanical Connector Technology

Mechanical Connector Technology



3. Product Components

- 3.1 Connector Boot
- 3.2 Connector Grip (green)
 - Plus "Cover" (clear)
 - Plus "V-groove tool" (orange)
- 3.3 Connector Holder
- 3.4 Fiber Holder



4. Product Care and Safety

- Use protective glasses when handling optical fibers
- Do not look directly at fiber ends, due to potential eye damage
- Ensure that cables are not connected to light sources
- Do not remove the connector dust cover prior to product installation
- Use proper disposal container for glass shards
- Use proper cleaning solvent on fiber ends
- Ensure the cleaver blade is clear of debris prior to use
 - Replace blade if worn or producing poor fiber cleaves



Appropriate Safety Procedures MUST always be followed

5. Required Tools

- Cleaver (Fitel S326 or equivalent)
- Fiber stripper (900 μ m)
- Isopropyl alcohol (99%) or 2-propanol
- Marker
- Kevlar scissors
- Metric measuring strip (ruler)

6. Installation Procedure

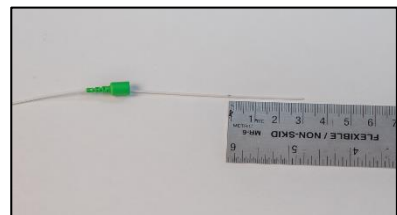
6.1 Connector Boot Installation

- Slide the connector boot over the 900 μ m buffered fiber, as shown



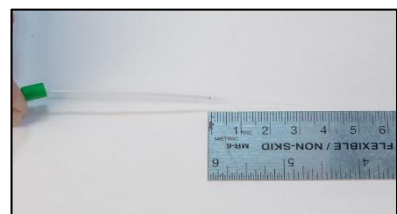
6.2 Measure and Strip the Fiber

- Measure 30mm from the end of the 900 μ m buffer fiber and mark the point on the jacket of the buffer
- Strip the buffer and acrylate coating off the fiber, from the 30mm section



6.3 Verify Stripped Fiber Length

- Measure stripped fiber to verify 30mm length

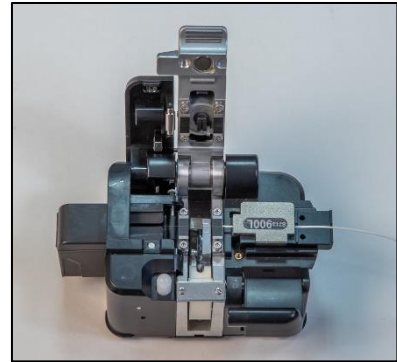


6.4 Clean Fiber

- Clean the stripped fiber using Isopropyl alcohol (99%) or 2-propanol

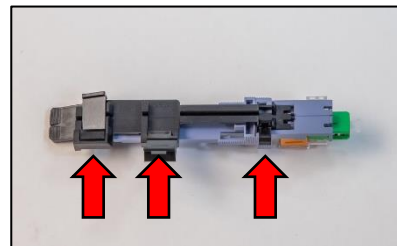
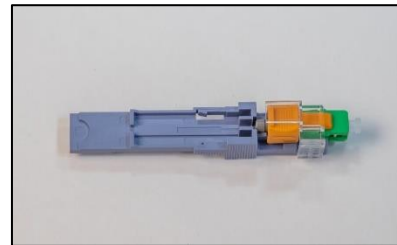
6.5 Cleave Fiber

- Cleave the stripped fiber to 10mm length



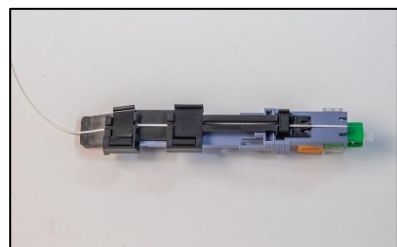
6.6 Prepare Connector and Fiber Holders

- Attach the connector grip to the connector holder (as shown)
- Attach the fiber holder to the connector holder
 - Turn over connector holder as shown
- Open the 3 latches of the fiber holder
 - Red arrows indicate latch locations



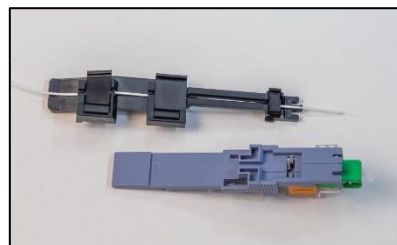
6.7 Position Fiber in Fiber Holder

- Lay the stripped/cleaved fiber into the fiber holder
 - The end of the buffer should align with the edge of the connector holder (as shown)
 - Close the 3 fiber holder latches, beginning with the smallest latch (closest to the connector grip)



6.8 Detach the Fiber Holder

- Detach the fiber holder from the connector holder

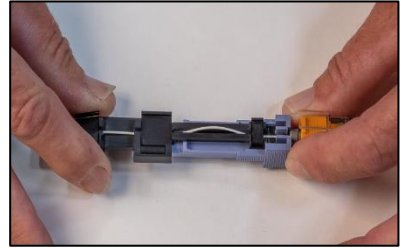
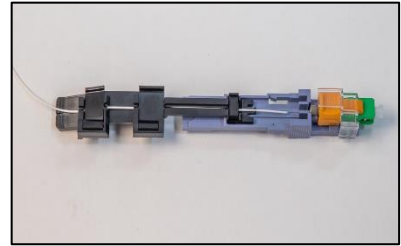


6.9 Place Fiber Holder on Connector Holder

- Place the fiber holder on the connector holder (as shown)
 - The fiber holder is placed on the opposite side of the connector holder relative to section 6.6

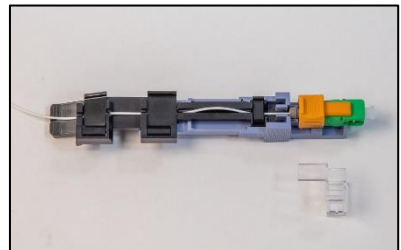
Caution: take care not to touch or break the bare fiber

- Slide the fiber into the back of the connector grip, using the fiber holder
 - The fiber holder contains markings to ensure that the bare fiber is the correct length
 - When seated correctly, the fiber will have a slight bow (as shown)



6.10 Remove Cover

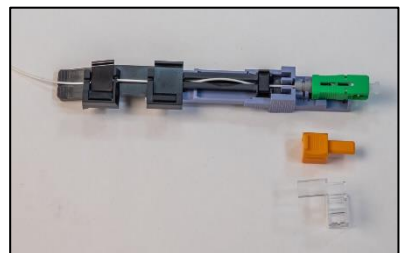
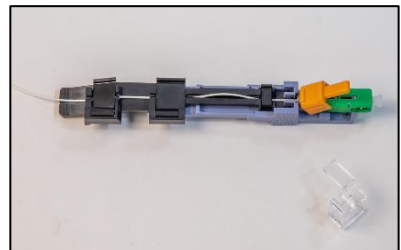
- Remove the clear cover from the orange V-groove tool



6.11 Remove V-groove Tool

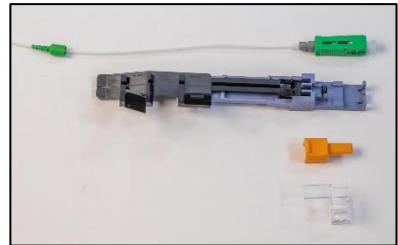
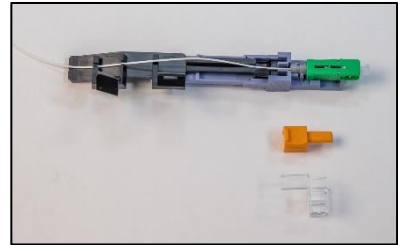
- Push down on the large side of the orange V-groove tool to unlock it
- Lift and remove the orange V-groove tool
 - This will lock the fiber into place within the connector

Note: do not discard the V-groove tool until final testing is complete



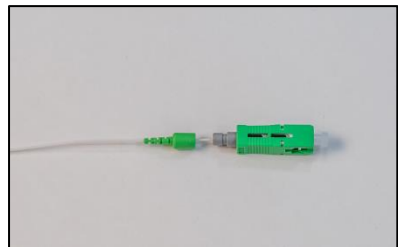
6.12 Remove Fiber and Connector

- Open the 3 latches of the fiber holder
- Remove the fiber and connector grip



6.13 Attach the Connector Boot

- Slide the connector boot up the fiber and seat onto the connector grip



6.14 Connector Assembly Complete

- If after building the connector, the connector fails, it is possible to reinsert the V-groove tool to reopen the connector and to readjust the fiber position

Note: do not remove the fiber from the connector

