





FITELS178/S153/S123 Quick Reference guide

Safety Instructions

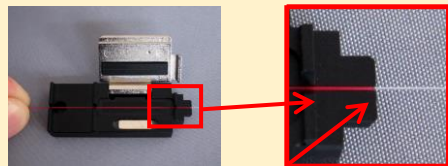
Before operating this product, please read the user's manual of safety instructions. The safety instructions are to help you use this product in a safe and correct way, and to prevent danger or injury to yourself or others.

Splicing Procedure

- ① Turn on power.
- ② Select applicable program*.
- ③ Perform Arc Check.
※ Please see "Arc Check" for details.
- ④ Insert protection sleeve.
- ⑤ Prepare the fibers.
- ⑥ Set fibers to the splicer.
- ⑦ Press  key.
- ⑧ Remove spliced fiber.
- ⑨ Slide protection sleeve over spiced point.
- ⑩ Place fiber to heater.
- ⑪ Press  key.
- ⑫ Remove the fiber.

< Fiber Preparation >

Setting the Fiber in the Fiber Holder



Edge of the coating

Place the fiber into the fiber holder leaving

Stripping the Fiber Coating



Hold the fiber tightly. Then move the S211 in the direction indicated by the arrow.

Fiber Cleaning



Clean the bare fiber with a lint free wipe soaked with fiber prep fluid.

Fiber Cleaving



S326A Cleaver



Place fiber holder into cleaver, then press the lever.



FITELS178/S153/S123 Quick Reference guide

Selecting a Fusion Program*

< Fusion Program >



Select "Fusion PRGM"
icon from the menu.



Select "All Programs".

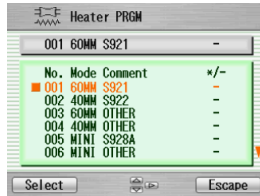


Select applicable
fusion program.

< Heater Program >



Select "Heater PRGM"
icon from the menu.



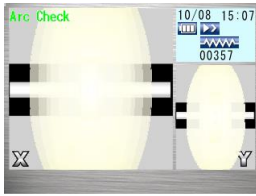
Select applicable
heater program.

Arc Check

Arc Check is the function to adjust the arc power in order to ensure optimal splicing results. Electrode wear and environmental conditions such as temperature, humidity, and altitude, may affect the arc power. Please select SM program before performing the Arc Check. Arc checks should be performed each day before splicing begins.



Open the windshield
and set the fibers .
Select "Arc Check"
icon from the main
menu.



Splicer automatically
feeds the fibers and
discharges an arc.



The results are indicated.
If the results are negative,
the machine will
automatically adjust the
arc power. Please perform
the arc check again.



FITELS178/S153/S123 Quick Reference guide

Cleaning and Maintenance Procedures

< Cleaning V-groove >



Run fiber across V-groove to remove dust in V-groove.

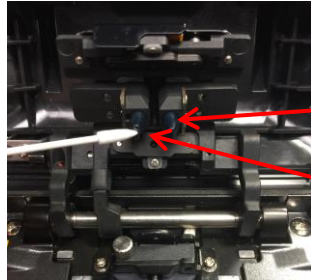
Cleaning brush



Clean V-groove by using a cleaning brush or a cotton swab soaked with ethanol.

< Cleaning Fiber Clamp >

Clean Fiber Clamp by using a cotton swab soaked with ethanol.



Fiber Clamps

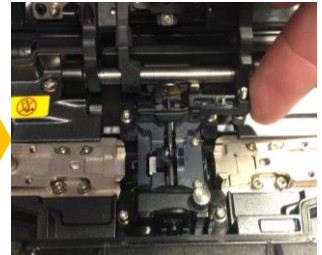
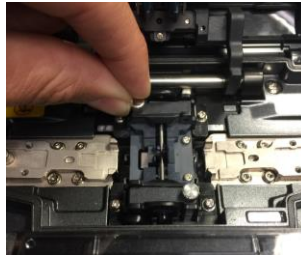
< Cleaning Electrodes >


Electrode Sharpener



Stick the tip of an electrode into the electrode sharpener and turn/twist the electrode 3-4 times.

< Replacement of Electrodes >



Loosen the Holding Plates screws and raise the plates. Replace the electrodes. Close the windshield, and then press the  key 10 times.

< Cleaning camera Lens >



Remove both electrodes. Clean camera lens by using cotton swab soaked with ethanol.



FITELS178/S153/S123 Quick Reference guide

Operation Keys

Up/ Down/ Left/ Right Key

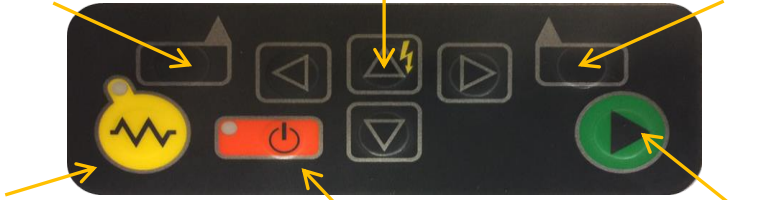
Move the cursor and
change the value

Function 1 Key

Select the function shown on the
left bottom corner of LCD.

Function 2 Key

Select the function shown on the
right bottom corner of LCD.



Heating Key

Start/Stop
the heating process.

Power Key

Turn the power on/off.

Start Key

Start/Pause/Restart
the splicing process.

Screen Indication

Splice Process → Ready

Fiber View → [Fiber View Area]

Current Function of Function Keys → Menu

Date and Time → 14/09 10:06

Status → [Status Icons]

Splice Count → 000122

Selected Splice program → SM12 SINGLE MODE

Selected Heater program → 004 40MM S922

Shortcut